


MAP LABEL	AIDS TO NAVIGATION	PLANE COORDINATES		LATITUDE	LONGITUDE
		X	Y		
R*8	DBN-S (01/22)	967,097	872,367	26°43'49.75"	80°02'50.63"
G*9	LT-9 (01/22)	967,369	869,911	26°43'25.42"	80°02'47.83"
R*10	DBN-10 (01/22)	967,1219	869,963	26°43'25.94"	80°02'49.48"


 US Army Corps of Engineers
 Jacksonville District
 SAFETY ON THIS JOB
 DEPENDS ON YOU

DEPARTMENT OF THE ARMY
 JACKSONVILLE DISTRICT, CORPS OF ENGINEERS
 JACKSONVILLE, FLORIDA

Designed by: WRM
 Drawn by: WRM
 Checked by: WRM
 Date: APR 2022

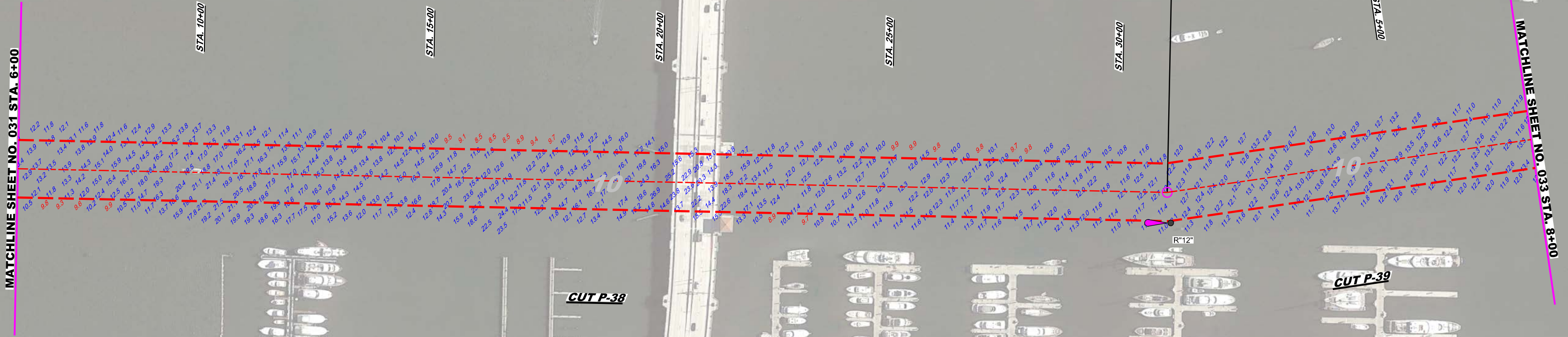
INTRACOASTAL WATERWAY
 JACKSONVILLE TO MIAMI, FLORIDA
 PALM BEACH COUNTY
HYDROGRAPHIC EXAM SURVEY FY22
10-FOOT PROJECT
 STA. 45+00 CUT P-37 THRU STA. 6+00 CUT P-38
PLAN

Scale: AS SHOWN
 Drawing no. **31**
 SHEET 31 OF 76

GRAPHIC SCALE
 1" = 100'
 0 100 200

NOTES:
 1. REFER TO SURVEY NO. 22-010.
 2. SEE SHEET NO. 1 FOR SURVEY NOTES.

MAP LABEL	AIDS TO NAVIGATION	PLANE COORDINATES		LATITUDE	LONGITUDE
		X	Y		
R-12	L-12 (01/22)	967,154	866,818	26°42'54.81"	80°02'50.45"



US Army Corps of Engineers
Jacksonville District
SAFETY ON THIS JOB
DEPENDS ON YOU

No.	Symbol	Zone

DEPARTMENT OF THE ARMY
JACKSONVILLE DISTRICT, CORPS OF ENGINEERS
JACKSONVILLE, FLORIDA

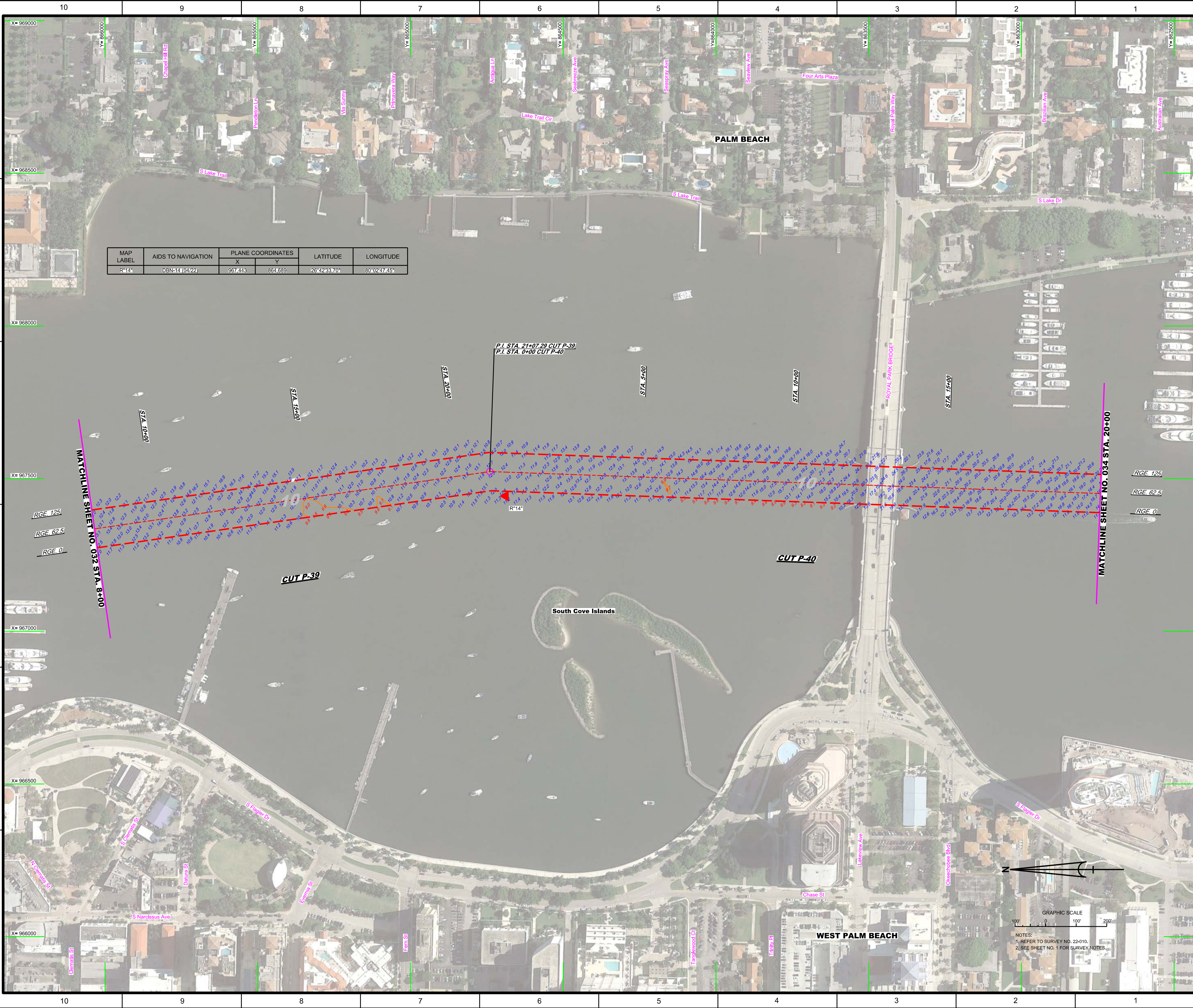
Checked by: GRL
Designed by: WRM
Drawn by: WRM
File No.: W12255-VIA-VIA-03A
Date: APR 2022

XXXXXXXXXXXXXXXXXXXX.DGN
22-010-00-AMW.DGN
22-010-00-AMW.DGN
WAC-AMC-GCE.DGN
22-010-00-00-SRIRK_PB.DGN
Reference: B18
22-010-00-00-SRIRK_PB.DGN
File Name:

INTRACOASTAL WATERWAY
JACKSONVILLE TO MIAMI, FLORIDA
PALM BEACH COUNTY
10-FOOT PROJECT
STA. 4+00 CUT P-38 THRU STA. 8+00 CUT P-39
PLAN

Scale: AS SHOWN
Drawing No. **32**
SHEET 32 OF 76

GRAPHIC SCALE
100' 0 100' 200'
NOTES:
1. REFER TO SURVEY NO. 22-010.
2. SEE SHEET NO. 1 FOR SURVEY NOTES.



MAP LABEL	AIDS TO NAVIGATION	PLANE COORDINATES		LATITUDE	LONGITUDE
		X	Y		
R*14*	DBN-14 (04/22)	967.443	864.689	26°42'33.70"	80°02'47.45"

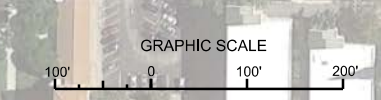
P.I. STA. 21+07.29 CUT P-39
P.I. STA. 0+00 CUT P-40

MATCHLINE SHEET NO. 032 STA. 8+00

MATCHLINE SHEET NO. 034 STA. 20+00

RCE 125
RCE 62.5
RCE 0

RCE 125
RCE 62.5
RCE 0



NOTES:
1. REFER TO SURVEY NO. 22-010.
2. SEE SHEET NO. 1 FOR SURVEY NOTES.

US Army Corps of Engineers
Jacksonville District

SAFETY ON THIS JOB
DEPENDS ON YOU

DEPARTMENT OF THE ARMY
JACKSONVILLE DISTRICT, CORPS OF ENGINEERS
JACKSONVILLE, FLORIDA

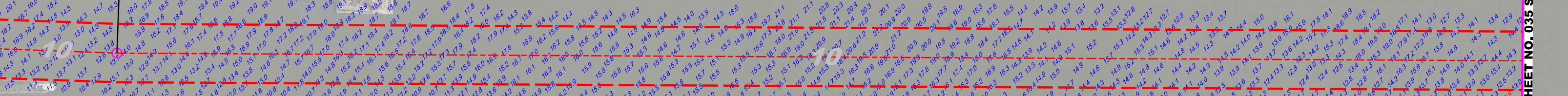
**INTRACOASTAL WATERWAY
JACKSONVILLE TO MIAMI, FLORIDA
PALM BEACH COUNTY
10-FOOT PROJECT**

STA. 8+00 CUT P-39 THRU STA. 20+00 CUT P-40
PLAN

Scale: AS SHOWN

Drawing no.
33

SHEET 33 OF 76



CUT P-40 and **CUT P-41** labels positioned across the bridge structure.

Matchline labels: **MATCHLINE SHEET NO. 034 STA. 20+00** on the left and **MATCHLINE SHEET NO. 035 STA. 30+00** on the right.

US Army Corps of Engineers
Jacksonville District
SAFETY ON THIS JOB DEPENDS ON YOU

DEPARTMENT OF THE ARMY
JACKSONVILLE DISTRICT, CORPS OF ENGINEERS
JACKSONVILLE, FLORIDA

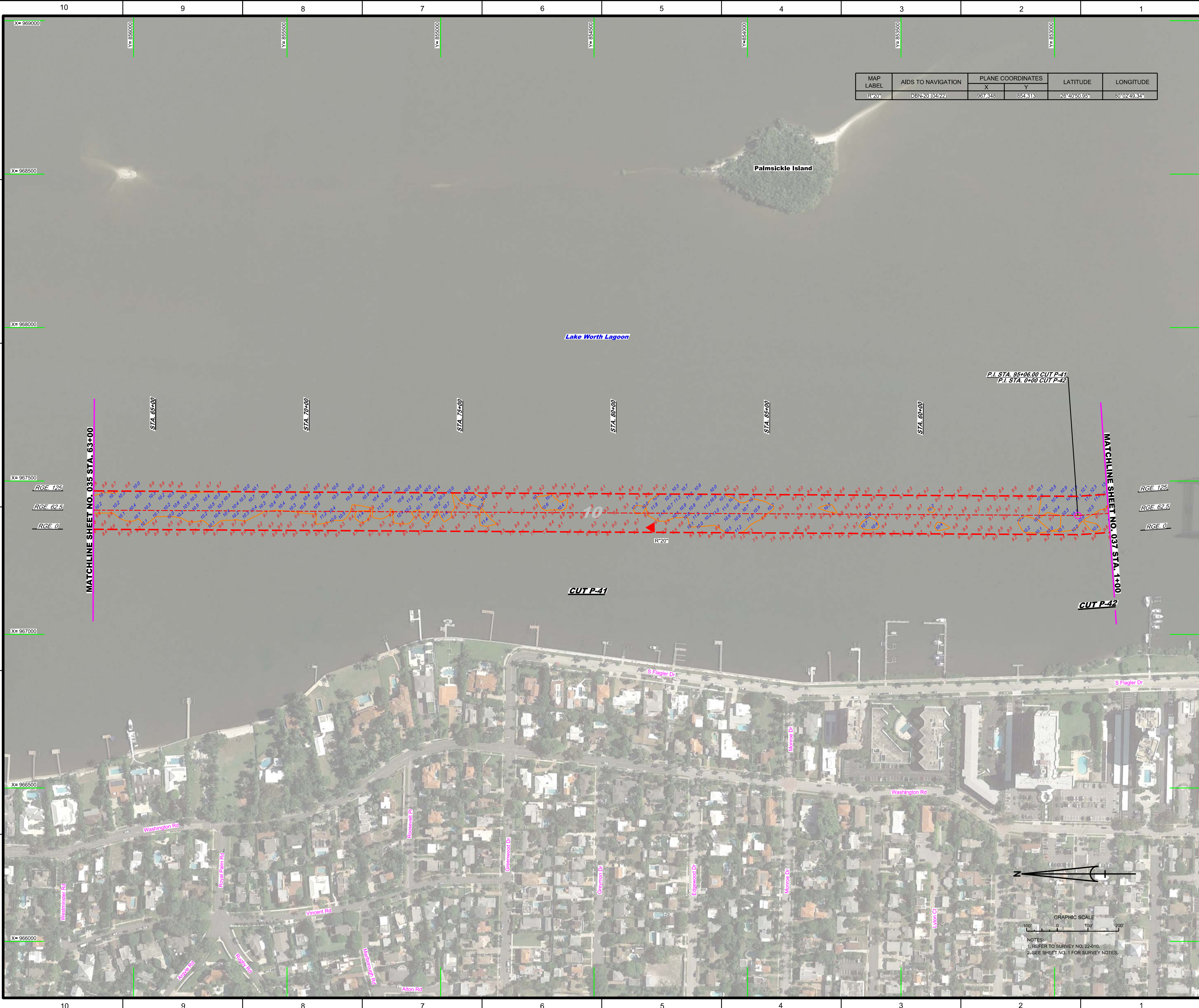
Drawn by: WRM
Checked by: GR
Designated by: WRM
DWG No: WRM
File No: W121225-000-0003
Date: APR 2022

22-010-A-S01A_P-40.DGN
22-010-G-B-S-R10A_P-40.DGN
22-010-B-S-R10A_P-40.DGN
22-010-H-R10A_P-40.DGN

INTRACOASTAL WATERWAY
JACKSONVILLE TO MIAMI, FLORIDA
PALM BEACH COUNTY
HYDROGRAPHIC EXAM SURVEY FY22
10-FOOT PROJECT
PLAN
STA. 20+00 CUT P-40 THRU STA. 30+00 CUT P-41

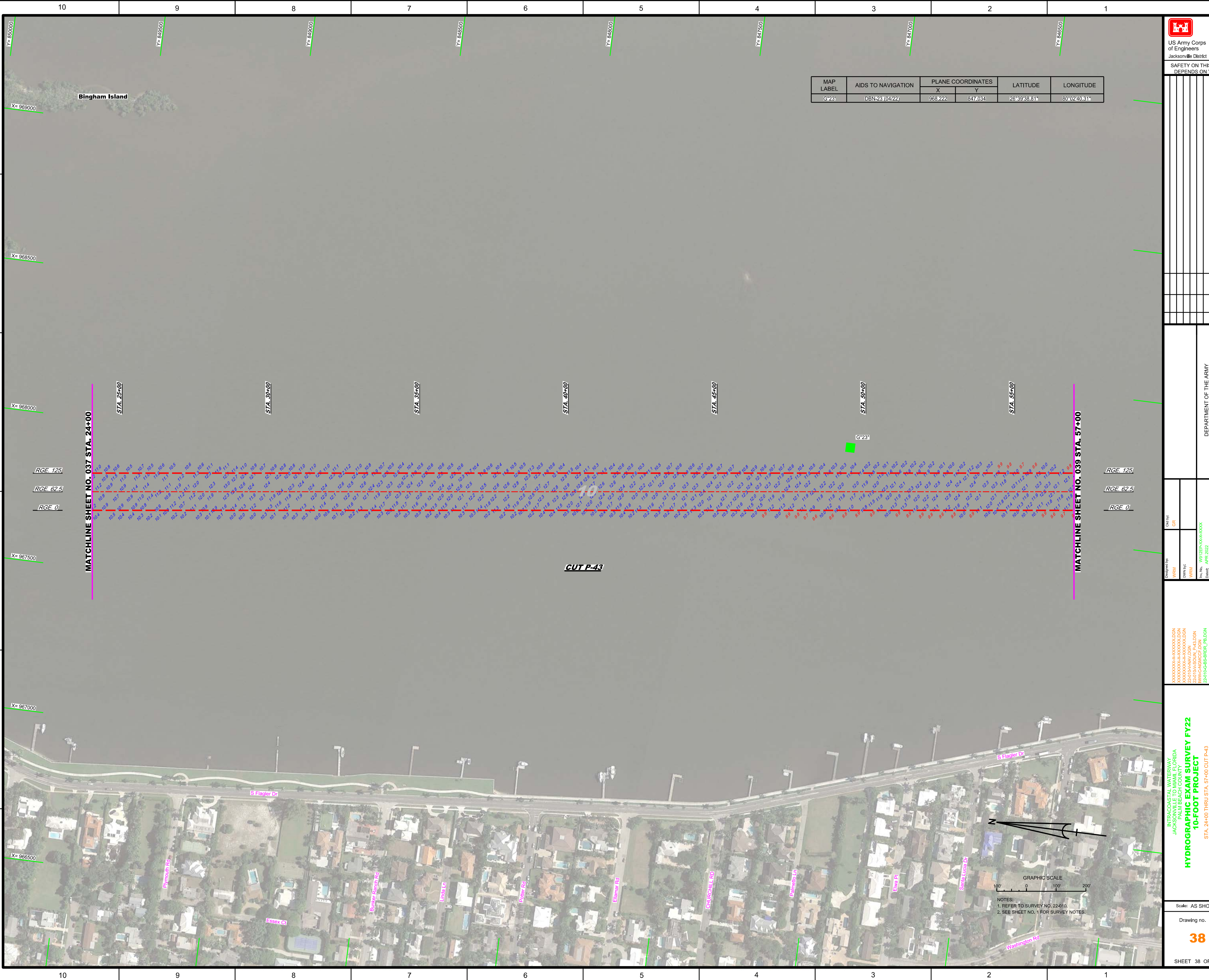
Scale: AS SHOWN
Drawing no. **34**
SHEET 34 OF 76

NOTES:
1. REFER TO SURVEY NO. 22-010.
2. SEE SHEET NO. 11 FOR SURVEY NOTES.



MAP LABEL	AIDS TO NAVIGATION	PLANE COORDINATES		LATITUDE	LONGITUDE
		X	Y		
R*20"	DBN-20 (04/22)	987.348	854.313	26°40'50.95"	80°02'49.34"

US Army Corps of Engineers Jacksonville District SAFETY ON THIS JOB DEPENDS ON YOU	
DEPARTMENT OF THE ARMY JACKSONVILLE DISTRICT, CORPS OF ENGINEERS JACKSONVILLE, FLORIDA	Date: By: Check: Approved:
INTRACOASTAL WATERWAY JACKSONVILLE TO MIAMI, FLORIDA PALM BEACH COUNTY 10-FOOT PROJECT PLAN STA. 69+00 CUT P-41 THRU STA. 1+00 CUT P-42	
Scale: AS SHOWN Drawing no. <div style="font-size: 24pt; font-weight: bold; color: orange;">36</div> SHEET 36 OF 76	



10 9 8 7 6 5 4 3 2 1

F
E
D
C
B
A

US Army Corps of Engineers
Jacksonville District
SAFETY ON THIS JOB DEPENDS ON YOU

US	SYMBOL	ZONE

DEPARTMENT OF THE ARMY
JACKSONVILLE DISTRICT, CORPS OF ENGINEERS
JACKSONVILLE, FLORIDA

MAP LABEL	AIDS TO NAVIGATION	PLANE COORDINATES		LATITUDE	LONGITUDE
		X	Y		
G'23'	DBN-23 (04/22)	968.222	847.034	26°39'38.81"	80°02'40.31"

MATCHLINE SHEET NO. 037 STA. 24+00

STA. 25+00

STA. 30+00

STA. 35+00

STA. 40+00

STA. 45+00

STA. 50+00

STA. 55+00

MATCHLINE SHEET NO. 039 STA. 57+00

RGE. 125

RGE. 62.5

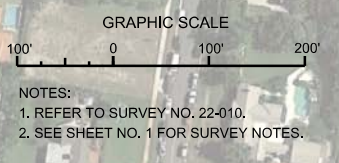
RGE. 0

RGE. 125

RGE. 62.5

RGE. 0

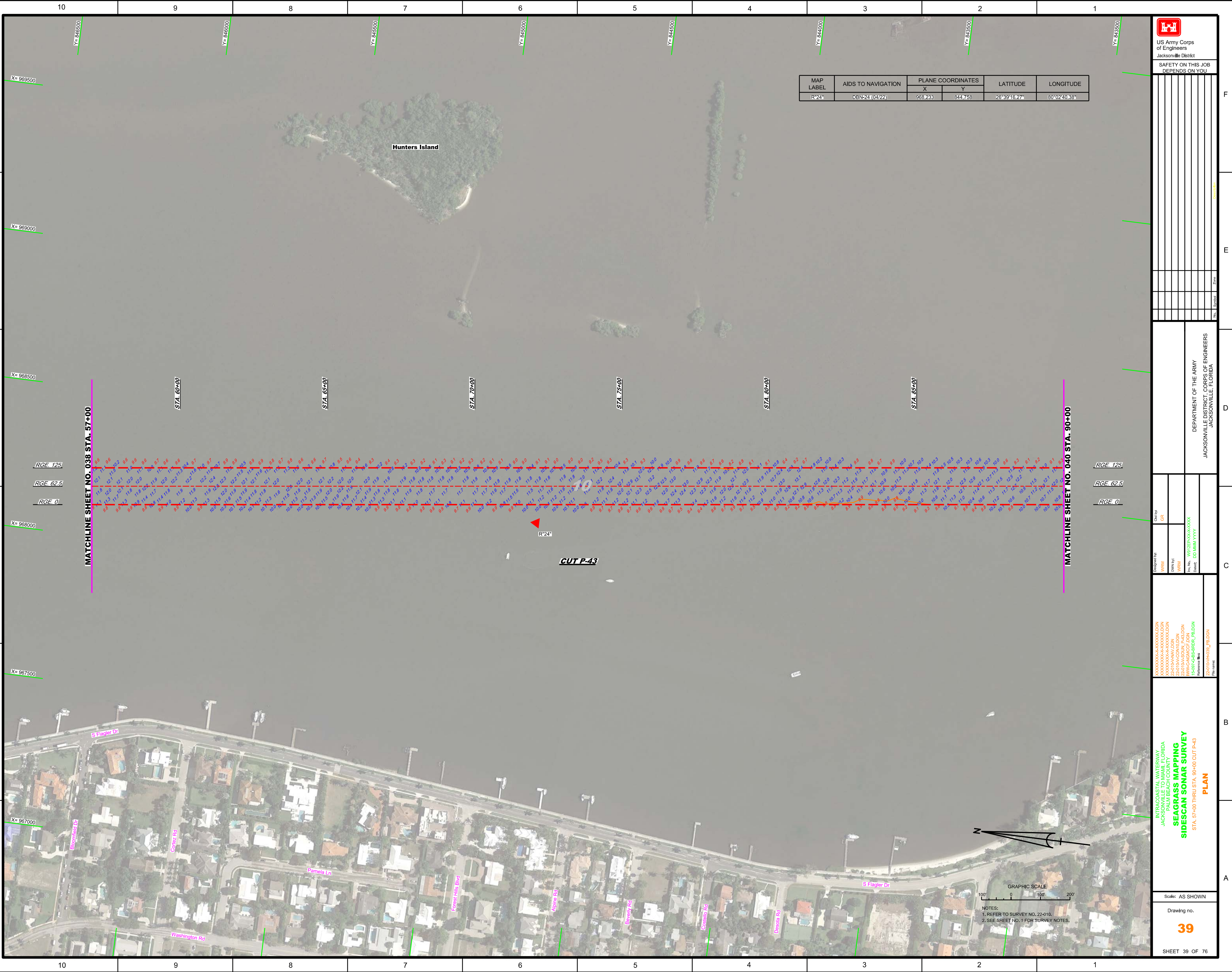
CUT P-43



Checked by: GR	Designed by: WRM	Drawn by: WRM	File No: W01225-24-00-P-034	Date: APR. 2022
XXXXXXXXXXXXXXXXXXXX XXXXXXXXXXXXXXXXXXXX XXXXXXXXXXXXXXXXXXXX XXXXXXXXXXXXXXXXXXXX XXXXXXXXXXXXXXXXXXXX XXXXXXXXXXXXXXXXXXXX XXXXXXXXXXXXXXXXXXXX XXXXXXXXXXXXXXXXXXXX XXXXXXXXXXXXXXXXXXXX XXXXXXXXXXXXXXXXXXXX		XXXXXXXXXXXXXXXXXXXX XXXXXXXXXXXXXXXXXXXX XXXXXXXXXXXXXXXXXXXX XXXXXXXXXXXXXXXXXXXX XXXXXXXXXXXXXXXXXXXX XXXXXXXXXXXXXXXXXXXX XXXXXXXXXXXXXXXXXXXX XXXXXXXXXXXXXXXXXXXX XXXXXXXXXXXXXXXXXXXX XXXXXXXXXXXXXXXXXXXX	XXXXXXXXXXXXXXXXXXXX XXXXXXXXXXXXXXXXXXXX XXXXXXXXXXXXXXXXXXXX XXXXXXXXXXXXXXXXXXXX XXXXXXXXXXXXXXXXXXXX XXXXXXXXXXXXXXXXXXXX XXXXXXXXXXXXXXXXXXXX XXXXXXXXXXXXXXXXXXXX XXXXXXXXXXXXXXXXXXXX XXXXXXXXXXXXXXXXXXXX	XXXXXXXXXXXXXXXXXXXX XXXXXXXXXXXXXXXXXXXX XXXXXXXXXXXXXXXXXXXX XXXXXXXXXXXXXXXXXXXX XXXXXXXXXXXXXXXXXXXX XXXXXXXXXXXXXXXXXXXX XXXXXXXXXXXXXXXXXXXX XXXXXXXXXXXXXXXXXXXX XXXXXXXXXXXXXXXXXXXX XXXXXXXXXXXXXXXXXXXX

INTRACOASTAL WATERWAY
JACKSONVILLE TO MIAMI, FLORIDA
PALM BEACH COUNTY
HYDROGRAPHIC EXAM SURVEY FY22
10-FOOT PROJECT
STA. 24+00 THRU STA. 57+00 CUT P-43
PLAN

Scale: AS SHOWN
Drawing no. **38**
SHEET 38 OF 76



NO.	SYMBOL	ZONE

MAP LABEL	AIDS TO NAVIGATION	PLANE COORDINATES		LATITUDE	LONGITUDE
		X	Y		
R-24	DBN-24 (04/22)	968,233	844,758	26°39'16.27"	80°02'40.38"

DEPARTMENT OF THE ARMY
JACKSONVILLE DISTRICT, CORPS OF ENGINEERS
JACKSONVILLE, FLORIDA

Designed by: **WRM**
 Drawn by: **WRM**
 Checked by: **WRM**
 Date: **DD/MM/YYYY**
 File name: **XXXXXXXXXXXXXXXXXXXX.dgn**
 Path: **XXXXXXXXXXXXXXXXXXXX**
 Project: **XXXXXXXXXXXXXXXXXXXX**
 Client: **XXXXXXXXXXXXXXXXXXXX**
 Reference file: **XXXXXXXXXXXXXXXXXXXX.dgn**
 File name: **XXXXXXXXXXXXXXXXXXXX.dgn**

INTRACOSTAL WATERWAY
JACKSONVILLE TO MIAMI, FLORIDA
PALM BEACH COUNTY
SEAGRASS MAPPING
SIDECAN SONAR SURVEY
STA. 57+00 THRU STA. 90+00 CUT P-43
PLAN

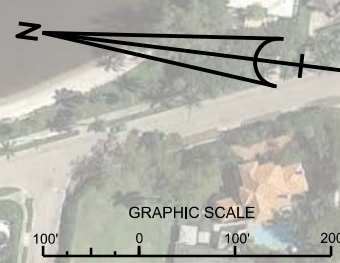
Scale: AS SHOWN

Drawing no.
39

SHEET 39 OF 76

MATCHLINE SHEET NO. 038 STA. 57+00

MATCHLINE SHEET NO. 040 STA. 90+00



NOTES:
 1. REFER TO SURVEY NO. 22-010.
 2. SEE SHEET NO. 1 FOR SURVEY NOTES.

MAP LABEL	AIDS TO NAVIGATION	PLANE COORDINATES		LATITUDE	LONGITUDE
		X	Y		
G'25"	DBN25 (04/22)	968,703	842,975	26°38'58.58"	80°02'35.35"
R'26"	DBN26 (04/22)	968,733	841,219	26°38'41.18"	80°02'35.16"
G'27"	LT-27 (04/22)	968,859	841,262	26°38'41.60"	80°02'33.76"



US Army Corps of Engineers
Jacksonville District

SAFETY ON THIS JOB
DEPENDS ON YOU

Rev	Symbol	Description

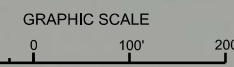
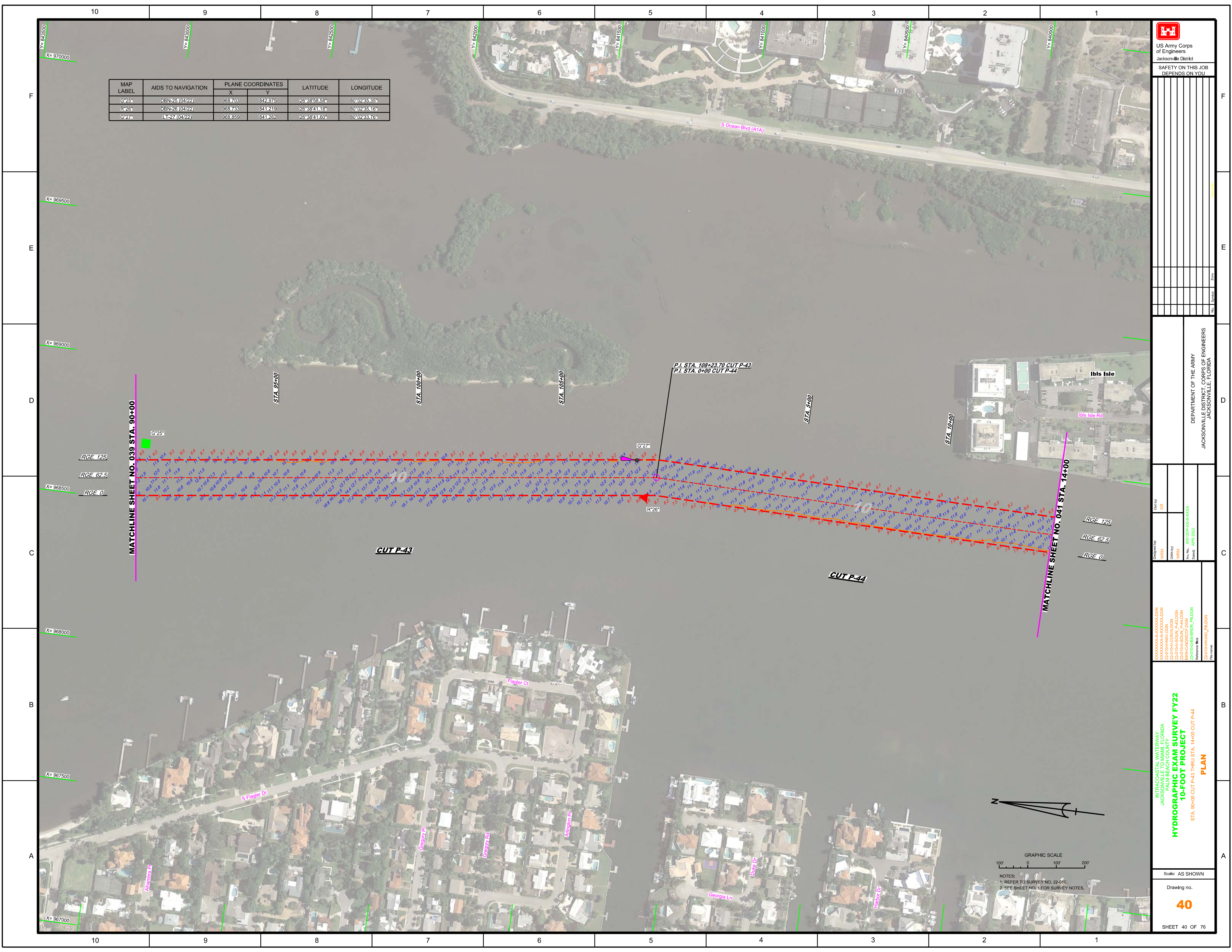
DEPARTMENT OF THE ARMY
JACKSONVILLE DISTRICT, CORPS OF ENGINEERS
JACKSONVILLE, FLORIDA

Checked by: GRL
Designed by: WRM
Drawn by: WRM
Title: W192250-A00-0000
Date: APR 2022

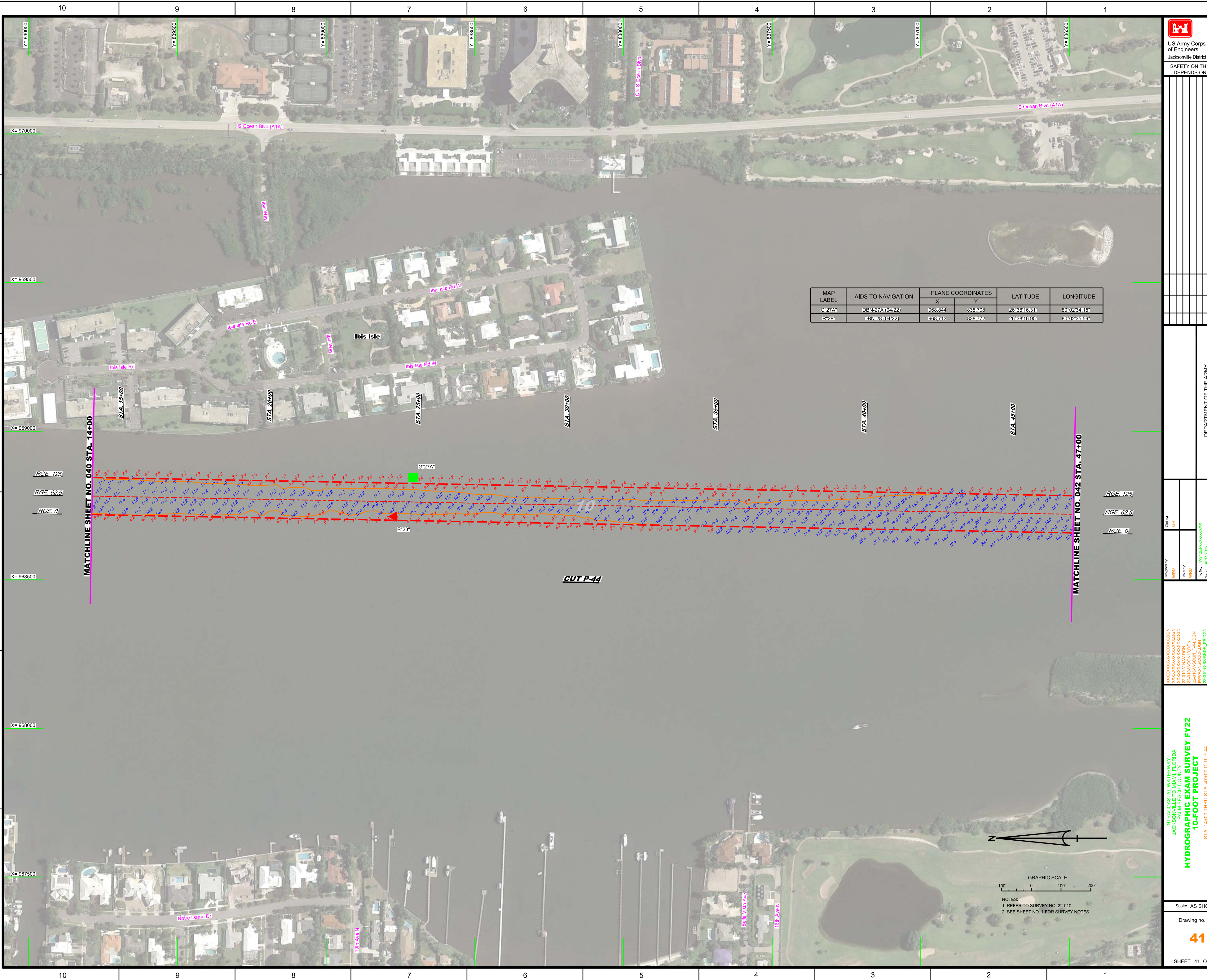
XXXXXXXXXXXXXXXXXXXX
XXXXXXXXXXXXXXXXXXXX
XXXXXXXXXXXXXXXXXXXX
22-010A-00-10.DGN
WAC-SANACE-F06.DGN
22-010A-00-10.DGN
Reference File:
22-010A-00-10.L_P8.DGN
File name:

INTRACOASTAL WATERWAY
JACKSONVILLE TO MIAMI, FLORIDA
PALM BEACH COUNTY T
HYDROGRAPHIC EXAM SURVEY FY22
10-FOOT PROJECT
PLAN
STA. 90+00 CUT P-43 THRU STA. 14+00 CUT P-44

Scale: AS SHOWN
Drawing no.
40
SHEET 40 OF 76



NOTES:
1. REFER TO SURVEY NO. 22-010.
2. SEE SHEET NO. 1 FOR SURVEY NOTES.



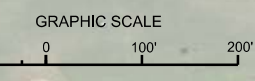
MAP LABEL	AIDS TO NAVIGATION	PLANE COORDINATES		LATITUDE	LONGITUDE
		X	Y		
G*27A*	DBN-27A (04/22)	968,844	838,708	26°38'16.31"	80°02'34.15"
R*28*	DBN-28 (04/22)	968,743	838,772	26°38'16.95"	80°02'35.99"

MATCHLINE SHEET NO. 040 STA. 14+00

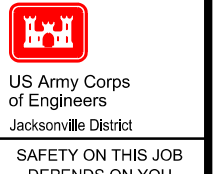
MATCHLINE SHEET NO. 042 STA. 47+00

RGE. 125
RGE. 62.5
RGE. 0

CUT P-44



NOTES:
1. REFER TO SURVEY NO. 22-010.
2. SEE SHEET NO. 1 FOR SURVEY NOTES.

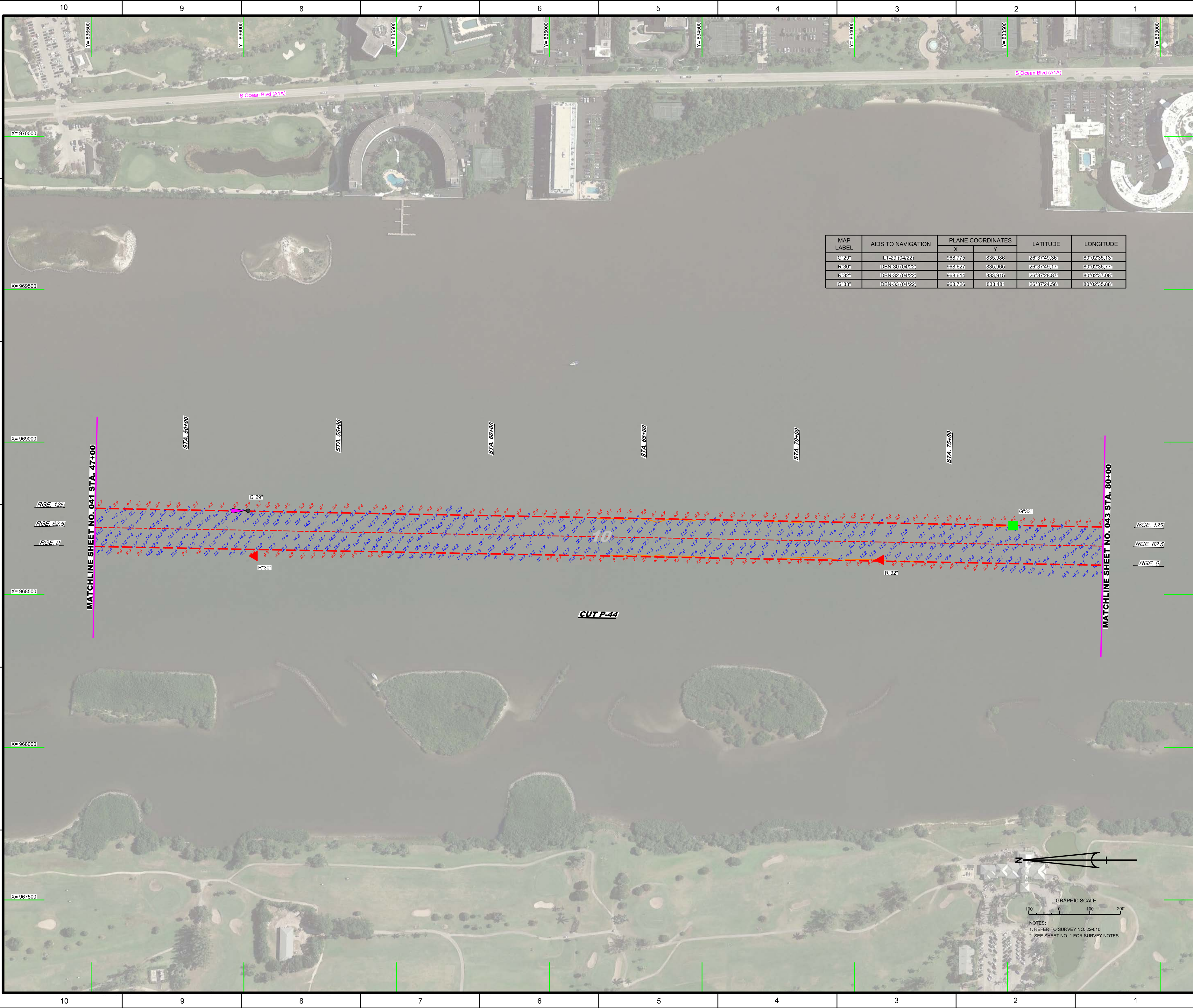


DEPARTMENT OF THE ARMY
JACKSONVILLE DISTRICT, CORPS OF ENGINEERS
JACKSONVILLE, FLORIDA

Check by: GRL
Designed by: WRM
Drawn by: WRM
File No: W91235-NAV-003
Date: APR 2022

XXXXXXXXXXXXXXXXXXXX
XXXXXXXXXXXXXXXXXXXX
XXXXXXXXXXXXXXXXXXXX
XXXXXXXXXXXXXXXXXXXX
XXXXXXXXXXXXXXXXXXXX
XXXXXXXXXXXXXXXXXXXX
XXXXXXXXXXXXXXXXXXXX
XXXXXXXXXXXXXXXXXXXX

INTRACOASTAL WATERWAY
JACKSONVILLE TO MIAMI, FLORIDA
FALLS BEACH COUNTY
10-FOOT PROJECT
STA. 14+00 THRU STA. 47+00 CUT P-44
PLAN



MAP LABEL	AIDS TO NAVIGATION	PLANE COORDINATES		LATITUDE	LONGITUDE
		X	Y		
G°29'	DBN30 (04/22)	968775	835986	26°37'49.36"	80°02'35.13"
R°30'	DBN30 (04/22)	968627	835965	26°37'49.17"	80°02'36.77"
R°32'	DBN32 (04/22)	968614	833915	26°37'28.87"	80°02'37.08"
G°33'	DBN33 (04/22)	968726	833481	26°37'24.56"	80°02'35.88"

US Army Corps of Engineers
Jacksonville District

**SAFETY ON THIS JOB
DEPENDS ON YOU**

DEPARTMENT OF THE ARMY
JACKSONVILLE DISTRICT, CORPS OF ENGINEERS
JACKSONVILLE, FLORIDA

Scale: AS SHOWN

Drawing no.
42

SHEET 42 OF 76

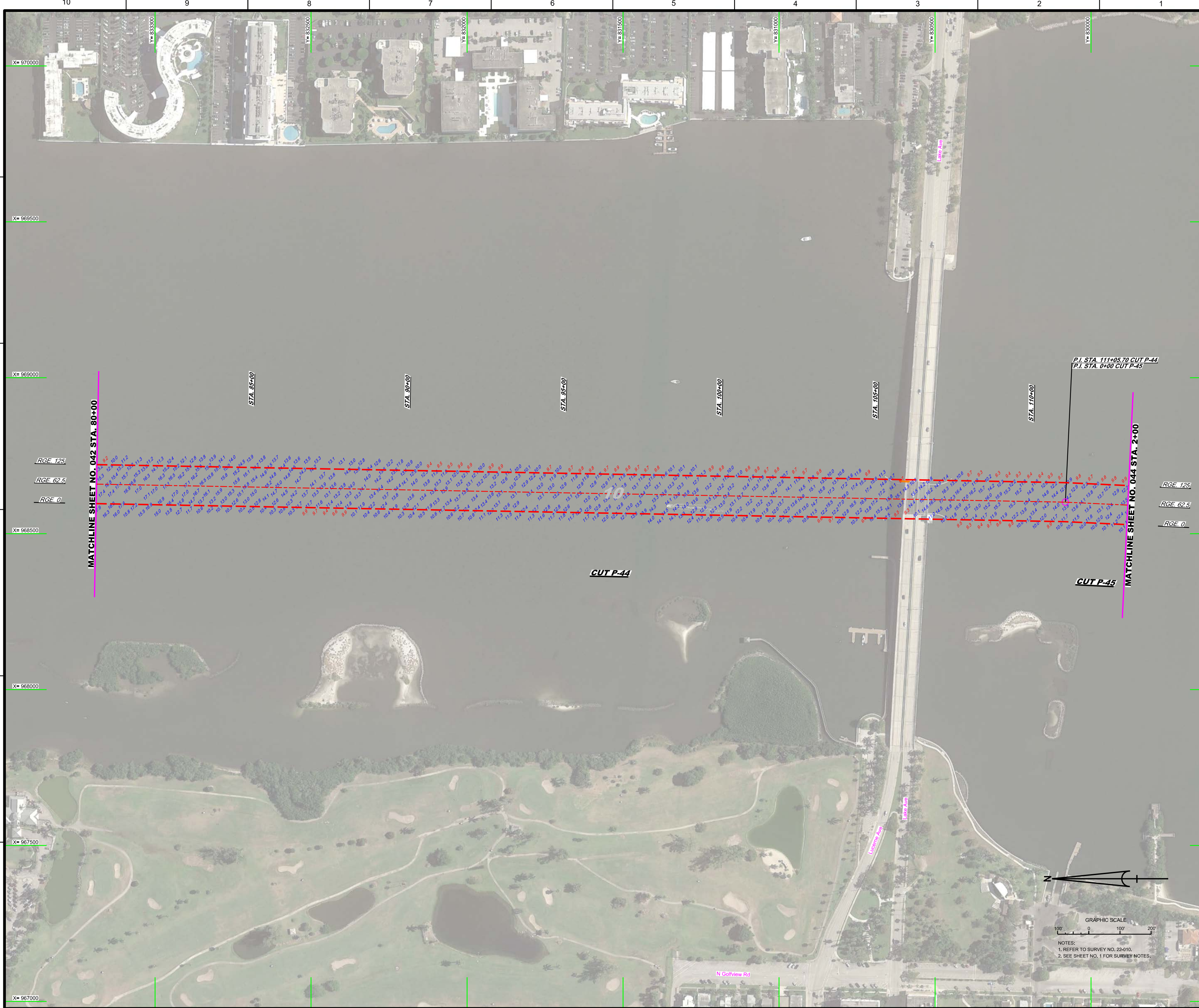
INTRACOASTAL WATERWAY
JACKSONVILLE TO MIAMI, FLORIDA
PALM BEACH COUNTY
**HYDROGRAPHIC EXAM SURVEY FY22
10-FOOT PROJECT**
STA. 47+00 THRU STA. 80+00 CUT P-44
PLAN

File name:
22-010V-HAZL_P4.DGN

Reference files:
22-010-GS-BB-SRDR_P6.DGN
WAC-CANACE.DGN
WAC-CANACE_FGN
22-010-V-CON10.DGN
22-010-V-CON10_ALGN
22-010-V-CON10_DGN
22-010-V-CON10_P1.DGN

Checked by:
WRM
Checked: APR 2022

Drawn by:
GRL



US Army Corps
of Engineers
Jacksonville District

DATE	DESCRIPTION	BY

DEPARTMENT OF THE ARMY
JACKSONVILLE DISTRICT, CORPS OF ENGINEERS
JACKSONVILLE, FLORIDA

Checked By: **GR**
Designed By: **WRM**
Drawn By: **WRM**
File No.: **W9125EA-9A-9-003**
Date: **APR 2022**

22-010A-AE-0010.DGN
22-010A-AE-0010.P44.DGN
WAC-CA0000.FGD
22-010A-ES-SR-0001.F6.DGN
Reference File:
22-010A-HALL.F6.DGN

**HYDROGRAPHIC EXAM SURVEY FY22
10-FOOT PROJECT**

INTRA-COASTAL WATERWAY
JACKSONVILLE TO MIAMI, FLORIDA
PALM BEACH COUNTY
STA. 80+00 CUT P-44 THRU STA. 2+00 CUT P-45
PLAN

Scale: AS SHOWN
Drawing no.
43

**P.I. STA. 111+05.70 CUT P-44
P.I. STA. 0+00 CUT P-45**

MATCHLINE SHEET NO. 042 STA. 80+00

MATCHLINE SHEET NO. 044 STA. 2+00

CUT P-44

CUT P-45

RGE 125

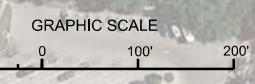
RGE 62.5

RGE 0

RGE 125


RGE 62.5

RGE 0



NOTES:
1. REFER TO SURVEY NO. 22-010.
2. SEE SHEET NO. 1 FOR SURVEY NOTES.




 US Army Corps
 of Engineers
 Jacksonville District
 SAFETY ON THIS JOB
 DEPENDS ON YOU

DEPARTMENT OF THE ARMY
 JACKSONVILLE DISTRICT, CORPS OF ENGINEERS
 JACKSONVILLE, FLORIDA

Drawn by: **WRM**
 Checked by: **GRL**
 Date: **APR 2022**
 Project No: **22-010-0010-CUT P-45**
 Reference files: **22-010-0010-PLAN.PLDGN**
 File name: **22-010-0010-PLAN.PLDGN**

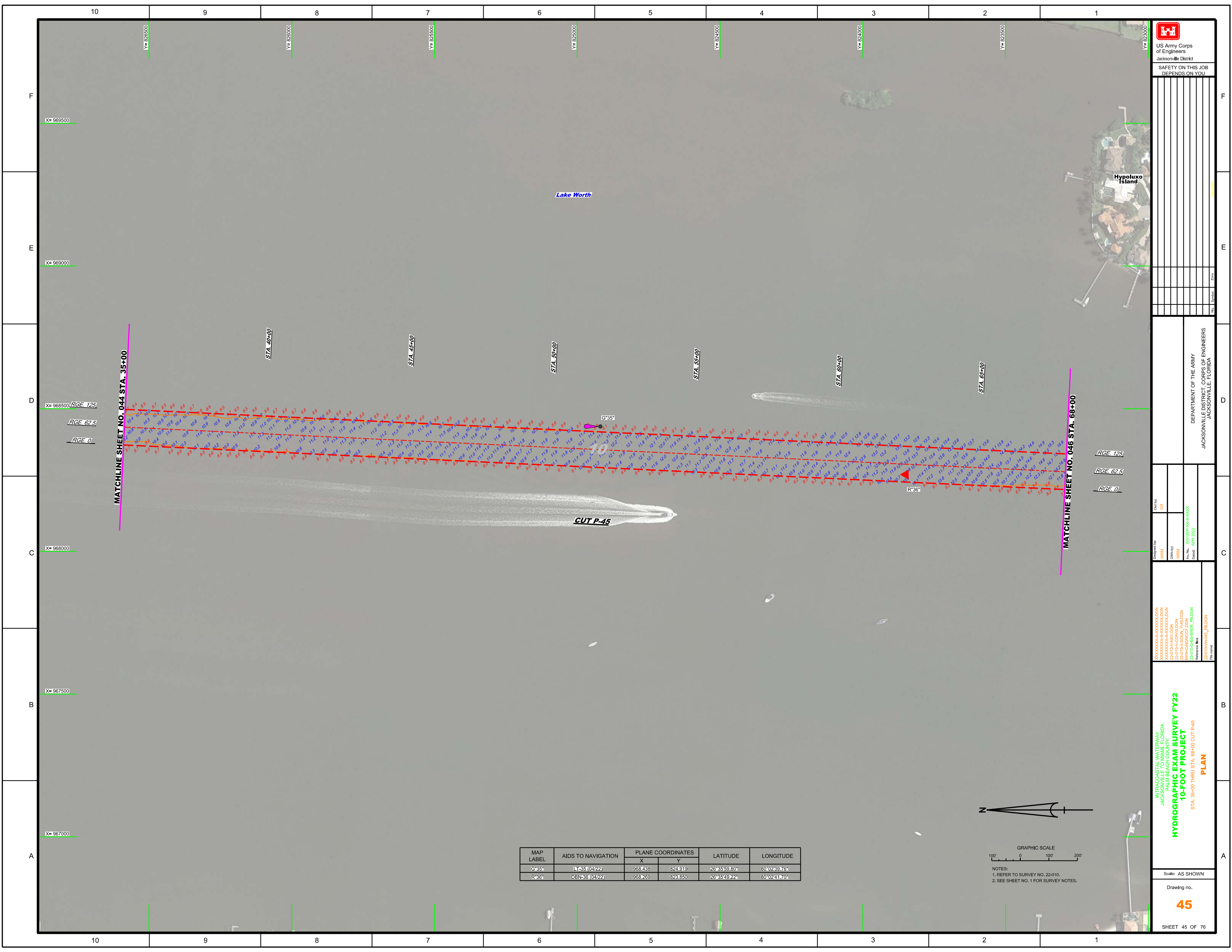
INTRACOASTAL WATERWAY
JACKSONVILLE TO MIAMI, FLORIDA
FAUJEE BEACH COUNTY T
10-FOOT PROJECT
STA. 2+00 THRU STA. 35+00 CUT P-45
PLAN


Scale: AS SHOWN
 Drawing no.
44
 SHEET 44 OF 76

MAP LABEL	AIDS TO NAVIGATION	PLANE COORDINATES		LATITUDE	LONGITUDE
		X	Y		
R'34"	DBN-34 (04/22)	968,417	827,856	29°38'28.88"	80°02'39.75"



GRAPHIC SCALE
 100' 0 100' 200'
 NOTES:
 1. REFER TO SURVEY NO. 22-010.
 2. SEE SHEET NO. 1 FOR SURVEY NOTES.




 US Army Corps of Engineers
 Jacksonville District
 SAFETY ON THIS JOB
 DEPENDS ON YOU

DEPARTMENT OF THE ARMY
 JACKSONVILLE DISTRICT, CORPS OF ENGINEERS
 JACKSONVILLE, FLORIDA

Designed by: WRM
 Drawn by: WRM
 File No: W81255-00-00-0000
 Date: APR 2022

INTRACOASTAL WATERWAY
 JACKSONVILLE TO MIAMI, FLORIDA
 PALM BEACH COUNTY
10-FOOT PROJECT
 STA. 35+00 THRU STA. 68+00 CUT P-45
PLAN

Scale: AS SHOWN
 Drawing no.
45
 SHEET 45 OF 76

MAP LABEL	AIDS TO NAVIGATION	PLANE COORDINATES		LATITUDE	LONGITUDE
		X	Y		
G-35	L-35 (04/22)	968,438	824,919	26°35'59.80"	80°02'39.76"
R-36	DBN-36 (04/22)	968,269	823,850	26°35'49.22"	80°02'41.70"



NOTES:
 1. REFER TO SURVEY NO. 22-010.
 2. SEE SHEET NO. 1 FOR SURVEY NOTES.